



Anatomy of ATS



We help the world breathe.



Table of Contents

Join us on social media: @atscommunity



Early Career Professionals Only!

@atsearlycareer #ATSEarlyCareer

Welcome to ATS3

ATS History and Mission4

Leadership and Governance5

Why Should I Get Involved in ATS?6

ATS Assemblies7

ATS Committees8

Steering Committee on Advancement and Learning.....9

The ATS International Conference.....10

Chapters..... 11

Programs for Early Career Professionals..... 12

Benefits of Membership 13

ATS Research Program.....14

ATS Public Advisory 15

Frequently Asked Questions.....16

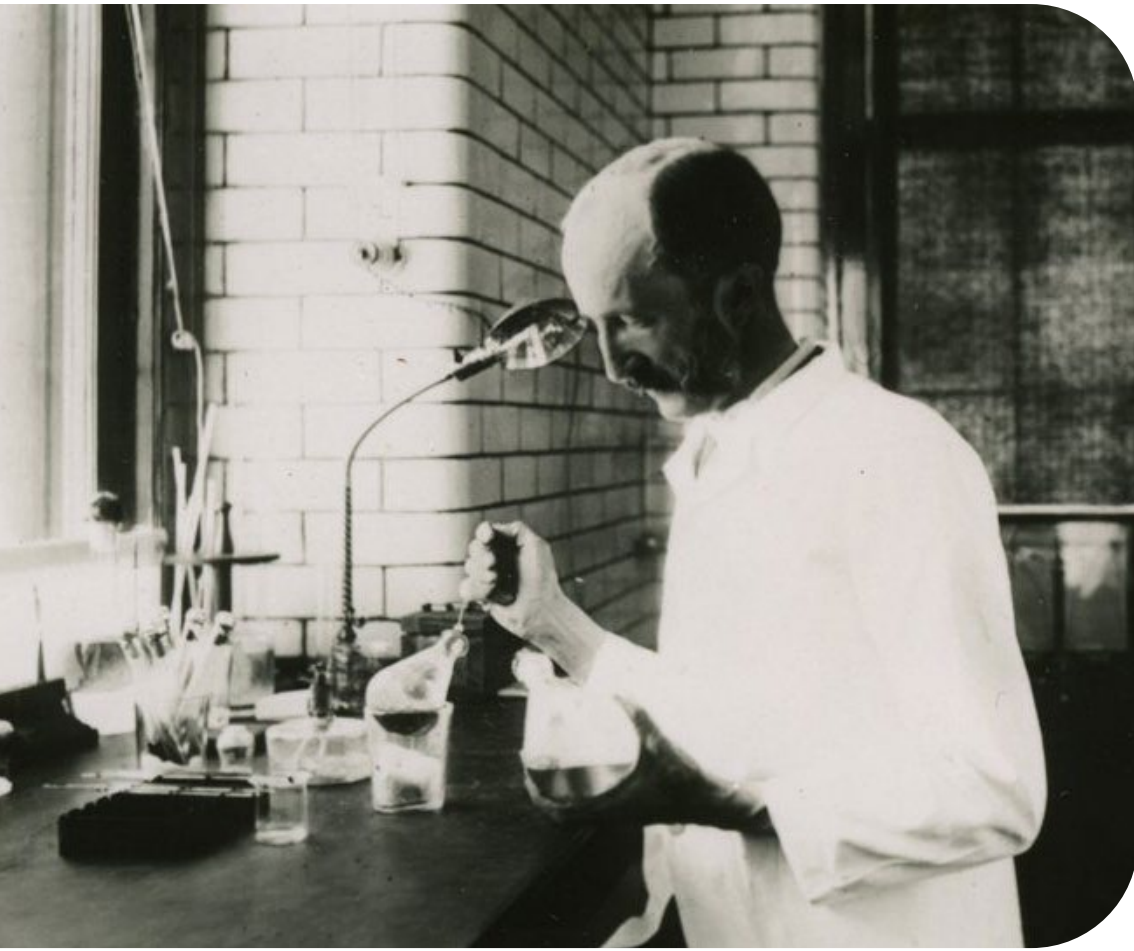
Welcome to ATS



As long-term members of ATS, we realized there was a lot about ATS that we didn't know. To make the ATS more accessible, we created the ATS 101 section in the Road Map, which has been helpful to ATS attendees as well as new members. The committee formerly known as MITT decided to create this brochure that would help you understand how ATS works, what the American Thoracic Society does and how to get involved. The Professional Development Committee also understands the importance of this brochure and we have enhanced it and updated it.

We hope this brochure will give you some ideas on how you can become more active within the organization. We have also highlighted numerous ways to get involved with the ATS. In addition to the Assemblies, there are many committees, taskforces and opportunities to advocate for improved healthcare for patients and increased funding for research.

American Thoracic Society (ATS) History and Mission



Dr. Edward Livingston Trudeau, for whom the society was named from 1938-1960



History

Founded in 1905 as the American Sanatorium Association to prevent, control, and treat tuberculosis; renamed the American Trudeau Society in 1938 and the American Thoracic Society in 1960. Originally the medical section of the American Lung Association, the Society became independently incorporated in 2000 as a 501 (c) (3) organization.

The American Thoracic Society is the world's leading medical society dedicated to accelerating the advancement of global respiratory health through multidisciplinary collaboration, education, and advocacy. Core activities of the Society's more than 16,000 members are focused on leading scientific discoveries, advancing professional development, impacting global health, and transforming patient care. Key areas of member focus include developing clinical practice guidelines, hosting the annual [International Conference](#), publishing four [peer-reviewed journals](#), advocating for improved respiratory health globally, and developing an array of patient education and career development resources.

Mission Statement

To accelerate global innovation in the advancement of respiratory health through multidisciplinary collaboration, education, and advocacy.

The Four Pillars of the ATS

With this new mission as our driving force, all ATS activities will now fall under four main pillars of respiratory health:

- **Leading Scientific Discovery**

The ATS is a leader in the fundamentals of respiratory science. Providing the most recent and relevant findings in cellular and molecular biology, biochemistry, pharmacology, population, and translational science, breathing and lung physiology (including ventilation/breathing). This commitment to research and discovery in science is the gold standard in the field.

- **Transforming Patient Care**

ATS members set the highest standard for respiratory care and treatment of patients. The ATS is the leading source for clinical tools, practice guidelines, and best practices based on the latest research and innovation.

- **Impacting Global Health**

The ATS drives positive, proactive change to improve public respiratory health and prevention on a local, national, and global scale. This applies to environmental issues such as air quality, climate change, exposure to contaminants, and potential manmade disasters, as well as contagious diseases and tobacco prevention. Robust research and risk awareness drive change to "help the world breathe."

- **Advancing Professional Development**

The ATS is a catalyst for the growth and development of health care professionals and practices. Education, networking, mentorship, funding, and career opportunities are essential to excel and advance.

ATS Leadership Structure & Governance



The American Thoracic Society (ATS) is led by a Board of Directors and an Executive Committee whose members have experience in nonprofit organizational leadership.

The Board comprises leaders elected by the membership, presidential appointees, and chairs of the organizations. Each has demonstrated excellence in their specialties and dedication to ATS's mission to help the world breathe. Two non-voting observers also serve on the Board.

ATS members are encouraged to join assemblies and committees relevant to their professional interests and consider opportunities to lead, including Secretary, Treasurer, and at-large director. Elections are held annually prior to the ATS annual conference.

Learn more about our structure, policies, and our leadership below.

- [Bylaws](#)
- [Leadership](#)
- [Board of Directors](#)
- [Organizational Structure](#)
- [ATS Policies](#)
- [ATS Nomination for Leadership Positions](#)

Why Should I Get Involved in ATS?



ATS is a member-driven organization; **all decisions include the voices of the members, i.e., you!** By becoming an active member of ATS, you can have a direct impact on pulmonary, critical care, and sleep medicine both nationally and internationally. Members engage in many activities including the development of ATS statements and guidelines, programming at our International Conference, creation of novel educational offerings, and more. In addition, involvement in ATS provides an outstanding opportunity to network which can result in new collaborations, a head start on job searches, and a pool of colleagues who can write letters of recommendation.

At first, the organization may seem impenetrable, and the International Conference can certainly be overwhelming. However, once you start to understand how decisions are made and understand the structure, ATS suddenly becomes much more manageable and approachable. For many of us, **some of our best friends have come out of connections made through the ATS.** Our goal is to provide you with insight into how the society is structured and suggest some ways for you to become involved. Without the active input of its members, ATS would not be the outstanding organization it is, and it can't continue to excel and improve.

First if you are not a member, become a member: <https://site.thoracic.org/membership>.

Next, get involved in a committee, in an assembly or an ATS section: <https://www.thoracic.org/members/assemblies/get-involved-with-ats.php>

What are Assemblies?



ATS is composed of a series of Assemblies, which are made up of ATS members with similar clinical, research, or educational interests. ATS members can join up to three Assemblies. Assemblies are the working groups of the ATS and are involved in activities such as developing ATS position papers, organizing sessions for the ATS International Conference, and supporting career development of fellows and early career faculty. Many Assemblies sponsor mentorship programs, early career professional groups, journal clubs, and other opportunities for networking with other ATS members.

Interested and motivated ATS members can also be appointed to one of several Assembly committees. These committees may include a programming committee (selects content for the ATS International Conference), a planning committee (develops Assembly projects), a nominating committee (nominates Assembly leadership), and a web committee (creates online content). Many Assemblies also have working groups in which members focus on a specific project or shared interest.

To learn more about each Assembly, Assembly Committees, Assembly Early Career Professionals Working Groups (ECPWG), and to get involved, click on link below on this page and contact your Assembly chair or the chair of an Assembly committee or Early Career Professional Working Group.

Finally, learn about ATS Assembly Mentoring Programs: Sign up to be a mentor or mentee! Please go to thoracic.org/go/mentoring-program to learn more about this valuable component of the ATS International Conference.

For more information about ATS Assemblies, visit thoracic.org/assemblies/index.php

ATS Committees



Separate from the Assemblies, there are 22 committees and interest groups that help direct the ATS's activities. Committee appointments are made once a year by the ATS president-elect, with help from Committee chairs. Though each Committee roster is capped at particular number of members, regular turnover occurs to allow new voices to join each Committee.

For a full list of committees and links to their individual web pages, visit:

<http://www.thoracic.org/about/committees/index.php>

To get involved with committees, start by filling out this form:

<https://www.thoracic.org/members/assemblies/get-involved-with-ats.php>

SCALE: Steering Committee on Advancement and Learning



The **ATS Steering Committee on Advancement and Learning (SCALE)** supports lifelong learning and career advancement for healthcare professionals in pulmonary, critical care, and sleep medicine. By offering innovative, evidence-based educational opportunities, SCALE enhances clinician knowledge, competence, and performance—ultimately improving patient outcomes and advancing the practice of medicine.

Mission

The ATS Steering Committee on Advancement and Learning (SCALE) promotes lifelong learning among adult and pediatric pulmonary, critical care, and sleep medicine clinicians and scientists by delivering innovative and rigorous educational opportunities to enhance their knowledge, competence, and performance, ultimately improving patient outcomes and advancing practice. We aim to foster a culture of continuous professional development that addresses the evolving educational and career advancement needs of our members.

Learn More & Get Involved

- [Learn more about SCALE and its committees](#)
- [Find out how to get involved with ATS](#)

Why Steering Committee on Advancement and Learning? (SCALE)

Members in Transition and Training (MITT)

+

Education

+

Clinician's Advisory

+

Training

=

SCALE

Former ATS education committees merged to form the **Steering Committee on Advancement and Learning (SCALE)** providing a home for education-based groups, initiatives and activities outside of the International Conference.

SCALE seeks to

Develop a long-term strategy for educational offerings.

Increase opportunities for member engagement

Create working groups based on evolving educational trends

Amplify voices of clinicians, researchers, and educators within the larger ATS picture

Structure

Led by 1–3 members of SCALE, this structure will have 7 committees who will report to the ATS Executive Committee. The groups will also incorporate liaisons such as:

- APCCSD
- ATS Chapters
- ATS Scholar
- International Conference Committee
- Pediatric Division Directors (PPDDA)
- Public Advisory Roundtable Representative
- Section on Medical Education

Each committee will focus on their respective areas of expertise, educational goals, and metrics.



What does each SCALE Committee do?

| Committee | Description | Target Audience |
|---------------------------------------|---|---|
| EVALUATIONS & OUTCOMES | Assesses and enhances the effectiveness and impact of learning programs within the ATS. | Those interested in data analysis, program evaluation, and evidence-based programming decisions. |
| EDUCATION TECHNOLOGY | Integrates technology into teaching and learning, evaluates educational software/tools, and serves as a resource on educational technology trends for other ATS committees involved in lifelong learning. | Members passionate about technology's role in the lifelong learning process. |
| BOARD REVIEW AND MOC | Oversees board certification and maintenance of certification for ATS learning activities, including the International Conference. | Expert clinicians and educators interested in continuous professional education, question-writing, and dissemination of evidence-based practices. |
| SKILLS-BASED LEARNING | Incorporates hands-on skills, practical training, and other skills-based educational programs. | Members interested in practical skill development within and outside of the International Conference. |
| LATE-BREAKING LEARNING | Addresses emerging topics and critical issues impacting the ATS community requiring rapid dissemination of knowledge and training. | Those who excel in staying on the cutting edge and adapting swiftly to new developments. |
| PROFESSIONAL DEVELOPMENT | Leads training programs, workshops, and other initiatives focused on skills development and career advancement for early and mid-career professionals in clinical and scientific roles. | Good match for those supporting others' development and career advancement brings them fulfillment. |
| CORE CURRICULUM | Responsible for choosing and organizing topics for the core curriculum, selecting and mentoring speakers, and reviewing MCO questions that are presented at the annual ATS International Conference. | All ATS members |

Want to know more? Please email SCALE@thoracic.org

Committees Under SCALE

- [SCALE: Board Review & MOC Committee](#)
- [SCALE: Core Curriculum Committee](#)
- [SCALE: Education Technology Committee](#)
- [SCALE: Evaluations & Outcomes Committee](#)
- [SCALE: Late-Breaking Learning Committee](#)
- [SCALE: Professional Development Committee](#)
- [SCALE: Skills-Based Learning Committee](#)

How Can I Be More Involved During the International Conference?



International Conference programming is a yearlong effort that is, for the most part, is driven by ATS Assemblies. If you are interested in being more involved in the ATS through service on a committee or chairing an educational session, it starts right here!

Pre-planning: Ensure you are using your ATS tools including the International Conference Program, the International Conference App, the Early Career Roadmap, and the Anatomy of the ATS pamphlet to 1) plan to attend sessions that are in your area of interest, 2) plan to attend your assembly or multiple assemblies annual meetings, 3) sign up for available mentoring session, and 4) identify session and assembly leaders who are already working in ATS Assemblies and Committees

At the Conference: While attending educational sessions, mentoring sessions, and assembly meetings, be sure to introduce yourself and your stated interest in the ATS. Ask for contact information such as emails of session and assembly leaders. Network with other attendees at the sessions. Think about the content delivered and what type of content or leadership is needed for the next International Conference.

After the Conference: Know the deadline for submission to the ATS International Conference 2026! Reach out to collaborate with individuals with similar interest to submit symposium suggestions during the “Call for Input” period immediately after the conference. Reach out to networked Programming Committee members to inquire about further involvement in planning committees.

Symposium submission process: Each assembly is allotted a specific number of slots for each type of session and its Program Committee ranks various submissions.

- Know the deadline!
- Look at recent programming from the International Conference.
- Reach out to Program Committee members for advice.
- Reach out to potential collaborators from other institutions.
- Brainstorm exciting and creative ideas



Each assembly is allotted a specific number of slots for each type of session. The Program Committee ranks the submissions to fill the slots. Don't be discouraged by rejection; assemblies often receive many submissions for only a few symposia slots. Get feedback and try again. Persistence pays off.

Quick Tips:

- Plan out your ATS 2025 schedule with a goal to get involved for 2026
- Network with ATS assembly and committee members and attendees
- *Timing is important:* Session/project proposals are due shortly after the International Conference.
- Remember, you shouldn't be discouraged by rejection. Assemblies and committees often receive many submissions for only a few slots.
- Get feedback and try again. Persistence pays off!



ATS Chapters



The ATS is committed to providing local and regional involvement for pulmonary and critical care providers and allied health professionals outside of the International Conference. The state Thoracic Society Chapters offer opportunities for local medical education through CME-based conferences, state and regional advocacy for the lung health of our populations, opportunities for medical students, residents, and fellows to get involved in career development, and networking amongst local peers and trainees. Joining your local Thoracic Society Chapter is easy!

Click the link to the chapter sign-up with your registration to the ATS International Conference, your ATS Membership, or the address listed below. If your state currently does not have a Thoracic Society Chapter, consider working with others in your state to initiate the process. Be sure to sign up for your chapter with your ATS registration!

[Learn more or become a chapter member here](#)

[Find a chapter near you. Click here for a full list of chapters.](#)

Events for Early Career Professionals



The ATS is committed to helping medical students, residents, fellows, early career faculty and other early career professionals pursue a successful career in Pulmonary, Critical Care, and Sleep Medicine. The ATS understands that the next medical breakthrough will be made by someone LIKE YOU – a member in training or an early career professional! Visit the [Professional Development for Early and Mid Career Professionals page](#) for more resources and career development tools.

Experts at the American Thoracic Society's Professional Development Committee have compiled a [Grant Resource Guide](#) to direct early career investigators to various timely and prominent funding and support opportunities in Pulmonary, Critical Care, and Sleep Medicine.

Here is a highlight of all the sessions, events and scholarship programs to make your experience at the ATS International Conference a more rewarding experience:



Networking Super Center

ATS Storytelling Series

Fellows Case Conference

Innovation in Fellowship Education Program

The Networking Exchange for Early Career Professionals

Student Scholars Program

Resident Boot Camp Program

Fellows Track Symposium

New Faculty Boot Camp

All these events can be found on the conference website: <https://conference.thoracic.org/>

Benefits of Membership



The ATS continues to grow, with over 18,000 members in 122 countries. Along with unparalleled opportunities for involvement, collaboration, and professional development, the ATS has several important benefits:

1. Subscriptions to four of the leading pulmonary and critical care medicine journals:
 - a. American Journal of Respiratory and Critical Care Medicine (the “blue” journal) - available as paper copy or online
 - b. American Journal of Respiratory Cell and Molecular Biology (the “red” journal) online only
 - c. Annals of the American Thoracic Society (the “white” journal) online only
 - d. ATS Scholar: health professions education open access journal
2. Subscriptions to online newsletters relevant to Pulmonary and Critical Care medicine clinicians and researchers (e.g., Washington Letter which shares ATS involvement in government affairs and advocacy)
3. Access to over 150 state-of-the-art clinical statements and guidelines
4. Access to hundreds of podcasts and educational videos related to core pulmonary, critical care, and sleep topics
5. Discounts on the International Conference and other ATS educational programs
6. Career development through Assembly membership and opportunities to get involved in ATS Committees
7. Opportunities to be involved in advocacy on a wide range of pulmonary, critical care, and sleep related issues



Launch Your Career

20 Years of Supporting Early Career Investigators

To advance discovery, the organization established the ATS Research Program in 2004. Since then, the program has supported 302 studies that have resulted in significant advances in pulmonary, critical care, and sleep medicine. These improvements include better understanding of lung diseases, stem cell applications, pulmonary fibrosis therapeutics, acute lung injury insights, and sleep hygiene interventions.

Why it matters: The ATS Research Program plays a vital role in advancing lung health, benefiting healthcare providers and patients alike. Its support of groundbreaking research results in valuable insights and improved medical treatments.

By the numbers: Leveraging an investment of over \$24M, the ATS Research Program has secured an additional \$880M in NIH funding to further research in respiratory health.

The big picture: The ATS Research Program's remarkable record of successful outcomes demonstrates its tremendous impact on the field. It has also fostered the careers of early-career investigators, ensuring a pipeline of talent for future healthcare advancements.

What's next: The ATS Research Program remains dedicated to advancing lung health through continued support for scientific research and the development of innovative treatments. To learn more about ATS Research Programs, click here: thoracic.org/research

The ATS Public Advisory Roundtable (PAR)

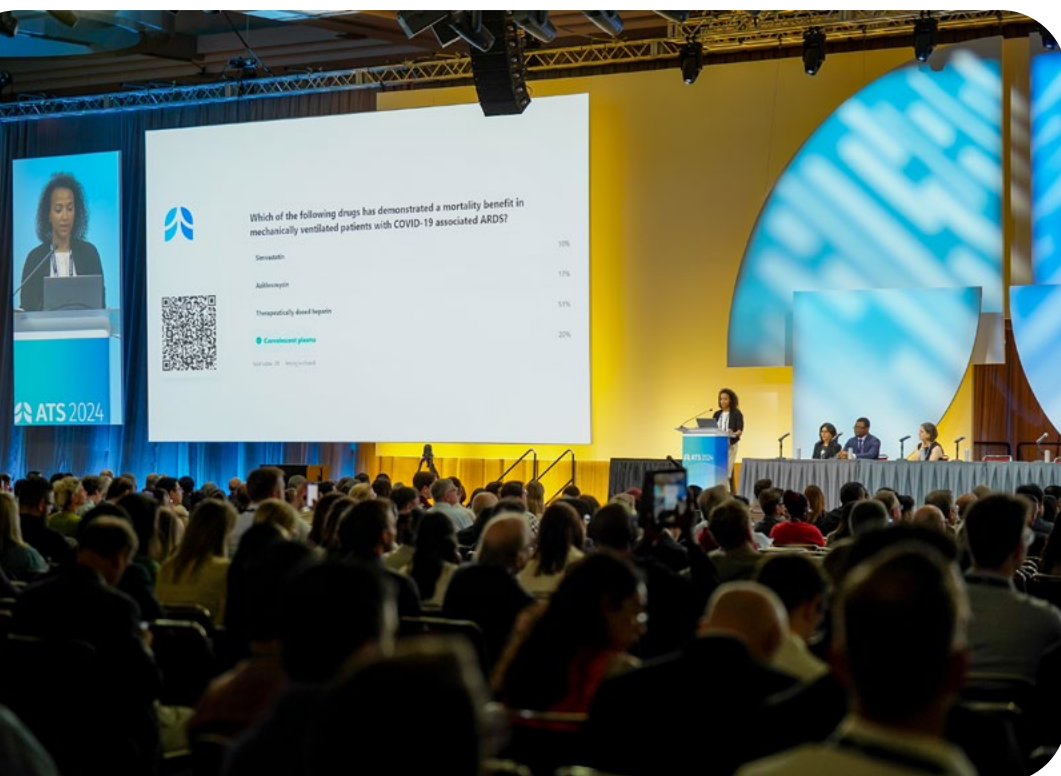


In February 2001, former ATS president William J. Martin II, MD, founded ATS PAR, the arm of the ATS that incorporates patient and family perspectives into the ATS's activities. Today, ATS PAR is a partnership with organizations representing people affected by respiratory diseases, critical illnesses, and sleep-related conditions. ATS collaborates with these patients and patient advocates to advance their shared educational, research, patient care, and advocacy missions.

To learn more please visit patients.thoracic.org

Or for more information, please contact par@thoracic.org

Frequently Asked Questions (FAQ)



Where can I access CME?

The ATS is accredited by the Accreditation Council for Continuing Medical Education (ACCME) to provide continuing medical education for physicians. The designation of AMA PRA Category 1 Credit(s)[™] per session will be available in January and in the Final Program. Physicians should only claim the credit commensurate with the extent of their participation in the activity. This live activity has been planned and implemented in accordance with the essential areas and policies of ACCME and are free from the control of commercial interests. To learn more click here: conference.thoracic.org/program/cme.php

MOC:

The American Thoracic Society offers several products to help busy clinicians stay on top of their Maintenance of Certification (MOC) as required by the American Board of Internal Medicine (ABIM) and the American Board of Pediatrics (ABP). To learn how you can get MOC while at the Annual ATS International Conference please visit conference.thoracic.org/.



Online and Contact Info

The ATS has a website designed to help early career professionals on their path to successful careers in pulmonary, critical care, and sleep medicine. To learn more about Career Development, visit <https://site.thoracic.org/learning/professional-development-for-early-and-mid-career-professionals>. As with all other aspects of the organization, the website is also MEMBER-DRIVEN, so if you can't find what you want there, please HELP US CREATE IT! Send an email to fellows@thoracic.org

If you are interested in getting more involved, please don't hesitate to contact us through ATS Staff:

ATS Staff for Professional Development Committee

Elizabeth Guzman
Director of Professional Development
Phone: 212-315-8627
Email: lguzman@thoracic.org

Lauren Lynch,
Senior Director, Learning Team
Phone: 212-315-8698
Email: llynch@thoracic.org

Or by sending them an e-mail at fellows@thoracic.org