

# Assembly on Critical Care (CC)

## Newsletter



Assembly Chair:  
**Eddy Fan, MD, PhD**

### Assembly Officers

Aluko A. Hope, MD, MSCE  
Program Chair  
[hopeal@ohsu.edu](mailto:hopeal@ohsu.edu)

Jen-Ting Chen, MD, MS  
Program Chair- Elect  
[tina.chen@ucsf.edu](mailto:tina.chen@ucsf.edu)

Hayley B. Gershengorn,  
MD, FCCM, ATSF Planning  
Chair  
[hbg20@med.miami.edu](mailto:hbg20@med.miami.edu)

C. Terri Hough, MD, MSc  
Nominating Chair  
[houghc@ohsu.edu](mailto:houghc@ohsu.edu)

Sivasubramanium  
Bhavani, MD  
Web Director  
[ssahety1@jhmi.edu](mailto:ssahety1@jhmi.edu)

### Assembly Contact

Website:  
<https://www.thoracic.org/members/assemblies/assemblies/cc/index.php>  
Email: [cc@thoracic.org](mailto:cc@thoracic.org)

### IN THIS ISSUE

Message from the Assembly Chair .....	1
Program Committee Report .....	2-4
Web Committee Report.....	4-5
Early Career Professional Working Group...5-7	
Aging in Critical Care Interest Group.....	7-8
WICC Newsletter Contribution.....	8-9
CC Advisory Group on ElectroNic Health Record Data Science.....	9
Documents Development and Implementation Committee (DDIC).....	10

## Message from the Assembly Chair

Dear Friends and Colleagues in the Critical Care Assembly,

It is hard to believe that nearly a year has passed in my term as Assembly Chair. It has been humbling to take the reins from our former Chair (and my good friend) Dr. Terri Hough, and an honor to work closely with the incredible leaders of the Critical Care Assembly. These are challenging times – the academic and clinical enterprise is under threat, and disinformation remains prevalent. More than ever, the power of community and the impact of the ATS are critical. I think Dr. Hough said it well: “Working together, we can mentor the next generation, advance each other’s work through collaboration, advocate for our core values, and support each other when times are hard.” There is still much to learn and much to do, but I am confident that we can achieve our common goals of advancing the work of our Assembly and professional society with all your help, engagement, and support. As an International Member, finding ways to increase the global footprint and reach of the Assembly and ATS remain important.

I look forward to seeing many of you at the International Conference in Orlando, Florida in May. Our Program Committee (led by Drs. Aluko Hope and Tina Chen) has put together an amazing slate of critical care content. For those attending the Conference, please join us at the Critical Care Assembly’s Annual Membership Meeting on Monday, May 18 from 5:00 -7:00 PM. We are trialing some changes to the meeting format this year to allow more time to catch up with your colleagues, engage with other assembly members, as well as continue to highlight the latest activities from the Critical Care Assembly and to celebrate and honor our awardees.

There are many ways to engage and stay active in both the Assembly and the larger ATS community throughout the year. If you have any questions about how to get involved, please do not hesitate to reach out to me, or to any member of the Assembly leadership. Some suggestions include:

1. Submit session proposals for the 2027 International Conference—these are due in late June. This is your chance to shape the content of next year’s conference!
2. Submit a proposal for Critical Care Assembly-sponsored projects such as clinical practice guidelines, policy statements, research statements, or workshop reports, which can influence clinical care, research agendas, and health policies. These are due in late July and are a great way to deepen your involvement in ATS (see below from Drs. Pete Morris and Carol Hodgson for some additional details).
3. Get involved in many different Working Groups or Special Interest Groups in the Assembly.
4. Submit your name, interest, and expertise to an ATS-wide database to help us find you for opportunities in ATS.
5. Submit abstracts for ATS 2027 or encourage your mentees and colleagues in your networks to submit. These are usually due in October or early November.
6. Advocate and support the missions of the pulmonary and critical care community of patients and providers at the federal and state government levels with our ATS advocacy groups. These groups campaign on such issues as clean air, climate change, women’s health, health equity, access to affordable care, research funding, diversity, and other important issues.
7. Nominate your colleagues for awards in the Critical Care Assembly as well as ATS-wide to shine a light on the tremendous work being done in critical care.

It is an honor and privilege to lead this great assembly. This is YOUR assembly – we are here to hear your ideas, incorporate your feedback, and advocate for you (our members). Please ensure that your voice is heard! As always, thank you for all that you do.

Best wishes,

Eddy

Eddy Fan, MD, PhD, ATSF

**Assembly on Critical Care (CC)****Membership Meeting****Monday, May 18, 2026  
5:00 pm - 7:00 pm****Orange County Convention Center, (Level III, West Concourse)  
Room: W304E-H**

## PROGRAM COMMITTEE REPORT

Aluko A. Hope, MD, MSCE (Chair) and Jen-Ting Chen, MD, MS (Chair-Elect)

**ATS 2026 International Conference  
Assembly on Critical Care (CC) Sessions**

<b>Session Code</b>	<b>Session Title</b>	<b>Session Type</b>	<b>Session Date</b>	<b>Session Time</b>
PG12	SUPPORTING THE FAILING HEART: MCS AND VA-ECMO FOR THE PRACTICING INTENSIVIST	Postgraduate Course	5/16/2026	12:00 PM - 4:00 PM
A17	DATA-DRIVEN ICU MANAGEMENT IN ACUTE RESPIRATORY FAILURE: PHYSIOLOGY, PRAGMATIC TRIALS, AND LEARNING HEALTH SYSTEMS	Mini Symposium	5/17/2026	9:15 AM - 11:15 AM
A25	CONTAGION: CASE REPORTS HIGHLIGHTING ACUTE RESPIRATORY FAILURE AND IMMUNE-MEDIATED LUNG DISEASE, WITH A FOCUS ON VENTILATOR MANAGEMENT AND EXTRACORPOREAL SUPPORT	Poster Discussion Session	5/17/2026	9:15 AM - 11:15 AM
A26	JOINT PEDIATRICS / CRITICAL CARE: PHYSIOLOGY, PHENOTYPES, AND TRAJECTORIES IN ACUTE RESPIRATORY FAILURE ACROSS THE LIFESPAN	Poster Discussion Session	5/17/2026	9:15 AM - 11:15 AM
A4	HOST-DIRECTED THERAPEUTICS IN SEPSIS: LESSONS LEARNED AND FUTURE DIRECTIONS	Critical Care Track	5/17/2026	9:15 AM - 10:45 AM
A49	THE USUAL SUSPECTS: COMMON BACTERIAL INFECTIONS IN CRITICAL CARE	Thematic Poster Session	5/17/2026	9:15 AM - 4:15 PM
A50	UNCOMMON AND EMERGING INFECTIONS IN THE ICU	Thematic Poster Session	5/17/2026	9:15 AM - 4:15 PM
A51	METABOLISM OFF THE RAILS: THYROID CRISIS, DKA, AND METABOLIC DERANGEMENTS	Thematic Poster Session	5/17/2026	9:15 AM - 4:15 PM
A52	CLINICAL CHALLENGES IN PNEUMONIA AND RESPIRATORY SUPPORT	Thematic Poster Session	5/17/2026	9:15 AM - 4:15 PM
A53	BELOW THE DIAPHRAGM: CASE REPORTS OF CRITICAL ILLNESS OF THE ABDOMEN	Thematic Poster Session	5/17/2026	9:15 AM - 4:15 PM
A54	FEVERED MINDS: INFECTIOUS AND INFLAMMATORY NEUROLOGIC DISEASE	Thematic Poster Session	5/17/2026	9:15 AM - 4:15 PM
A55	OPTIMIZING VENTILATORY SUPPORT ACROSS THE SPECTRUM OF ACUTE RESPIRATORY FAILURE	Thematic Poster Session	5/17/2026	9:15 AM - 4:15 PM
A56	HEMODYNAMIC COLLAPSE IN CRITICAL ILLNESS: PREDICTION, PHYSIOLOGY, AND RESCUE THERAPIES	Thematic Poster Session	5/17/2026	9:15 AM - 4:15 PM
A86	ILLNESS & IDENTITY: SYSTEMIC OPPRESSION & THE ETHICS OF CARE	Critical Care Track	5/17/2026	2:15 PM - 3:45 PM
A102	OUTBREAK: MULTISYSTEM PRESENTATIONS SPANNING DERMATOLOGIC, ENDOCRINE, HEMATOLOGIC, INFECTIOUS, AND METABOLIC DISORDERS, OFTEN MARKED BY DIAGNOSTIC AND THERAPEUTIC COMPLEXITY	Poster Discussion Session	5/17/2026	2:15 PM - 4:15 PM
A103	BEYOND ONE-SIZE-FITS-ALL: DOSE, TIMING, AND CONTEXT IN MODERN DAY CRITICAL CARE	Poster Discussion Session	5/17/2026	2:15 PM - 4:15 PM

A104	JOINT CC / RCMB BENCH-TO-BEDSIDE: NOVEL INSIGHTS INFORMING CLINICAL TRANSLATION IN ACUTE LUNG INJURY	Poster Discussion Session	5/17/2026	2:15 PM - 4:15 PM
A96	SEDATION, DELIRIUM, AND MOBILITY: INTERACTING PATHWAYS SHAPING RECOVERY AFTER CRITICAL ILLNESS	Mini Symposium	5/17/2026	2:15 PM - 4:15 PM
A97	PRECISION SEPSIS: HOST-RESPONSE PHENOTYPES AND TARGETED THERAPEUTIC PATHWAYS	Mini Symposium	5/17/2026	2:15 PM - 4:15 PM
B25	VARIATION, VULNERABILITY, AND VALUE IN CRITICAL CARE EPIDEMIOLOGY	Poster Discussion Session	5/18/2026	9:15 AM - 11:15 AM
B4	WORDS MATTER: THE POWER OF LANGUAGE IN SHAPING CRITICAL CARE	Scientific Symposium	5/18/2026	9:15 AM - 10:45 AM
B48	NEUROCRITICAL EMERGENCIES AT THE EXTREMES OF EXCITATION AND SUPPRESSION	Thematic Poster Session	5/18/2026	9:15 AM - 4:15 PM
B49	WHEN THE SAC FILLS: CARDIAC INFECTION AND PERICARDIAL CRISIS	Thematic Poster Session	5/18/2026	9:15 AM - 4:15 PM
B50	BROKEN PUMPS AND LEAKING VALVES: ACUTE ISCHEMIC AND STRUCTURAL HEART DISEASE	Thematic Poster Session	5/18/2026	9:15 AM - 4:15 PM
B51	WHEN THE RHYTHM BREAKS AND PRESSURE BUILDS: ARRHYTHMIAS, ANEURYSMS, AND BRASH	Thematic Poster Session	5/18/2026	9:15 AM - 4:15 PM
B52	LEFT, RIGHT, AND UPSIDE DOWN: HEART FAILURE AND SHOCK	Thematic Poster Session	5/18/2026	9:15 AM - 4:15 PM
B53	SELECTED CASE REPORTS IN AUTOIMMUNE, AIRWAY, AND DERMATOLOGIC DISEASE	Thematic Poster Session	5/18/2026	9:15 AM - 4:15 PM
B54	BEYOND THE LUNGS: MULTISYSTEM DETERMINANTS OF OUTCOMES IN CRITICAL CARE	Thematic Poster Session	5/18/2026	9:15 AM - 4:15 PM
B55	SEDATION, MOVEMENT, AND MEANING: ICU PRACTICES THAT DEFINE RECOVERY	Thematic Poster Session	5/18/2026	9:15 AM - 4:15 PM
B82	PRECISION VS PRAGMATISM: STRIKING BALANCE IN THE ICU	Critical Care Track	5/18/2026	2:15 PM - 3:45 PM
B103	THE MATRIX: CHALLENGING CASES CENTERED ON DIAGNOSTIC UNCERTAINTY AND ETHICAL DECISION-MAKING, INCLUDING MEDICATION-RELATED COMPLICATIONS, NEUROLOGIC AND ONCOLOGIC DISEASE, AND PREGNANCY-ASSOCIATED CRITICAL ILLNESS	Poster Discussion Session	5/18/2026	2:15 PM - 4:15 PM
B104	DELIVERING CRITICAL CARE: SYSTEMS, TIMING, AND OPERATIONAL DECISIONS	Poster Discussion Session	5/18/2026	2:15 PM - 4:15 PM
B96	PLACE, POWER, AND PRE-MORBIDITY: CONTEXTUAL DRIVERS OF CRITICAL ILLNESS	Mini Symposium	5/18/2026	2:15 PM - 4:15 PM
C105	PERSONALIZING RESPIRATORY SUPPORT IN ARF AND ARDS: MECHANISMS, MONITORING, AND MODELING	Poster Discussion Session	5/19/2026	2:15 PM - 4:15 PM
C24	PRECISION SIGNALS IN SEPSIS AND ACUTE LUNG INJURY: PHENOTYPES, PREDICTION, AND PERSONALIZED TREATMENT	RAPiD Poster Discussion Session	5/19/2026	9:15 AM - 11:15 AM
C48	NON-INFECTIOUS ACUTE LUNG INJURY AND ARDS	Thematic Poster Session	5/19/2026	9:15 AM - 4:15 PM
C49	OLD DOGS AND NEW TRICKS: MEDICATION-RELATED TOXICITY FROM ESTABLISHED TO EMERGING THERAPIES	Thematic Poster Session	5/19/2026	9:15 AM - 4:15 PM
C5	FROM CANNULAS TO CONCEPTS: THE PRACTICE, EVIDENCE AND SCIENCE OF VV-ECMO	Critical Care Track	5/19/2026	9:15 AM - 10:45 AM
C50	ADDING FUELS TO THE FIRE: CASES OF VIRAL TRIGGERS AND HEMOPHAGOCYTIC LYMPHOHISTOCYTOSIS	Thematic Poster Session	5/19/2026	9:15 AM - 4:15 PM
C51	HEMATOLOGIC DISORDERS, ONCOLOGIC AND IMMUNOSUPPRESSIVE COMPLICATIONS	Thematic Poster Session	5/19/2026	9:15 AM - 4:15 PM
C52	HIGH STAKES AND TIGHT SPACES: ADVANCED PROCEDURAL DECISION-MAKING, THORACIC EMERGENCIES, AND PREGNANCY IN CRITICAL CARE	Thematic Poster Session	5/19/2026	9:15 AM - 4:15 PM

C53	TOXIC EXPOSURES: WHEN THINGS GO SIDEWAYS	Thematic Poster Session	5/19/2026	9:15 AM - 4:15 PM
C54	FROM EARLY DETECTION TO OUTCOMES IN SEPSIS	Thematic Poster Session	5/19/2026	9:15 AM - 4:15 PM
C55	TRENDS, DISPARITIES, AND PRACTICE PATTERNS IN CRITICAL CARE	Thematic Poster Session	5/19/2026	9:15 AM - 4:15 PM
C56	STRENGTHENING CRITICAL CARE DELIVERY: EDUCATION, WORKFORCE DEVELOPMENT, AND QUALITY IMPROVEMENT	Thematic Poster Session	5/19/2026	9:15 AM - 4:15 PM
C84	ENDOTHELIAL DYSFUNCTION IN CRITICAL ILLNESS: FROM MECHANISMS TO THERAPIES	Critical Care Track	5/19/2026	2:15 PM - 3:45 PM
D14	IMMUNE-ENDOTHELIAL BIOLOGY AND TARGETED THERAPEUTICS IN ACUTE RESPIRATORY DISTRESS SYNDROME	Mini Symposium	5/20/2026	8:15 AM - 10:15 AM
D25	FROM ABCDEF TO AFTERCARE: ICU PRACTICES AND MECHANISMS THAT SHAPE RECOVERY	Poster Discussion Session	5/20/2026	8:15 AM - 10:15 AM
D4	OPTIMIZING CRITICAL CARE THROUGH LEARNING HEALTH SYSTEMS: COMPONENTS AND CONSIDERATIONS	Critical Care Track	5/20/2026	8:15 AM - 9:45 AM
D82	THE AGE OF INCLUSION: BUILDING BETTER CRITICAL CARE TRIALS FOR OLDER ADULTS	Critical Care Track	5/20/2026	11:00 AM - 12:30 PM
D93	TURNING POINTS IN CRITICAL ILLNESS: TRAJECTORIES, TIMING, AND LONG-TERM OUTCOMES	Mini Symposium	5/20/2026	11:00 AM - 1:00 PM
D104	THE ANDROMEDA STRAIN: AIRWAY AND CARDIAC INSTABILITY, COMPLICATED BY PROCEDURAL CHALLENGES, RENAL FAILURE, AND TRANSPLANT CONSIDERATIONS	Poster Discussion Session	5/20/2026	11:00 AM - 1:00 PM

## WEB COMMITTEE REPORT

Sivasubramaniam Bhavani, MD (Web Director)

The Critical Care Assembly Web Committee continues to bring high quality content to the members in the form of social media, podcasts, and webinars.

Our Committee has launched a new initiative [Lit Bits](#) (short for Literature Bits), headed by our Web Apprentice, Shiv Patel. Lit Bits is a short-form reel series on YouTube and Instagram featuring a quick summary of major clinical trials in critical care. We have featured CLOVERS, BALANCE and PREOXI trials and have several more lined up thanks to our contributors Shiv Patel, PJ Tiberio, Aryan Shiari, and others.

We have had recent releases of our Elevator Pitch podcast by Divya Shankar and our At the Bedside podcast by Matt Stutz. We have had 5 webinars since last year's conference, including 2 virtual grand rounds by the Early Career Working Group as well as a webinar on building resilient research teams with Dr. Wes Ely.

Our social media team led by Cathy Gao and Ghassan Kamel have recently started a private group on LinkedIn, have continued to grow our @ATSCritCare Twitter/X account (now with almost 14K followers), and our BlueSky account @atscritcare.bsky.social. Follow us for all the important Critical Care Assembly news and for live-tweeting during the ATS 2026 Conference!

As part of the Web Committee, we are always looking for members interested in contributing to content such as reels, podcasts, journal clubs and webinars. Please contact the Web Director, Siva Bhavani, if you are interested in getting involved!

Follow our Web and Social Media accounts here: [ATS Web](#)

Find all of The Assembly's social media channels in one place — just one click away via Linktree: [https://linktr.ee/ats\\_cc\\_assembly?utm\\_source=qr\\_code](https://linktr.ee/ats_cc_assembly?utm_source=qr_code)  
 Linktree is a simple landing page that holds all our important links so you can easily connect with everything we do. You can also scan the QR code to access it instantly



Be sure to follow us at @ATS\_Assemblies for news on webinars, deadlines, and other things you might have missed in your inbox!

## EARLY CAREER PROFESSIONAL WORKING GROUP (ECPWG)

Nick Ingraham, MD & Joe Hippensteel, MS, MD (Co-Chairs)  
 Alice Gallo De Moraes, MD, & Catherine Gao, MD, MS (Co-Chairs Elect)

The ECPWG promotes representation of the views of the early career professionals within the Assembly on Critical Care (CCA) and opportunities to become more involved in the CCA.

Our objectives are to:

- Create avenues for early career professionals of the CCA to get more involved with the Assembly and the ATS including:
  - [Mentorship program](#)
  - [Apprenticeship Program](#)
  - [Early career professionals' database](#)
  - [Virtual Grand Rounds speaking opportunities](#)
  - [Critical Care Transitions Webinars](#)
- Improve access to participation by early career members in the International Conference program:
  - Collaborate with the program committee to place early career members as session facilitators/moderators
  - [Teaching competition](#)
  - Networking event at the International Conference
- Connect and engage early career members:
  - [Social media presence](#) – X/Twitter ([@atscritcare](#)), BlueSky ([@atscritcare.bsky.social](#)), and LinkedIn ([ATS Assembly on Critical Care \(CC\)](#))
  - Speakers Bureau to offer ECP members speaking opportunities around the country
  - Web content: [webinars](#), [ECPWG Grand Rounds](#), and [ECP Highlights](#)
  - Lit Bits: [Youtube LitBits Playlist](#)

**Assembly Mentoring Programs' Meeting Spot**

The Assembly Mentoring Programs is offering a meeting spot exclusively for mentors and mentee to meet.

**Hyatt Regency Orlando – Celebration 10**  
 Sunday, May 17th – Monday, May 18 from 7 am to 7 pm

Our multidisciplinary membership includes a diverse group of clinicians, educators, administrators, and researchers in critical care that lead the ECPWG projects below:

Project	Lead	Email
Apprenticeship	Elias Pratt	<a href="mailto:elias.pratt@duke.edu">elias.pratt@duke.edu</a>
Database	Narges Alipanah-Lechner	<a href="mailto:narges.alipanah@ucsf.edu">narges.alipanah@ucsf.edu</a>
Education	Danish Ahmed	<a href="mailto:danish.ahmed@fcc.edu">danish.ahmed@fcc.edu</a>

Mentorship	Abby Chua (Co-lead) Matthew Modes (Co-lead)	<a href="mailto:abigail.chua@stonybrookmedicine.edu">abigail.chua@stonybrookmedicine.edu</a> <a href="mailto:matthew.modes@cshs.org">matthew.modes@cshs.org</a>
Networking	Priscilla de la Cruz	<a href="mailto:Priscilla.m.delacruz@gmail.com">Priscilla.m.delacruz@gmail.com</a>
Social media	Cathy Gao-Howard (Co-lead) Ghassen Kamel (Co-lead)	<a href="mailto:catherine.gao@northwestern.edu">catherine.gao@northwestern.edu</a> <a href="mailto:Ghassen.kamel@health.slu.edu">Ghassen.kamel@health.slu.edu</a>
Speakers roster	Pat Lyons (Co-lead) Kelsey Dunlap-Hills (Co-lead)	<a href="mailto:lyonspa@ohsu.edu">lyonspa@ohsu.edu</a> <a href="mailto:Kelsey.hills-dunlap@cuanschutz.edu">Kelsey.hills-dunlap@cuanschutz.edu</a>
Website	Siva Bhavani (Co-lead) Alicia Rizzo (Co-lead)	<a href="mailto:bhavani.siva@gmail.com">bhavani.siva@gmail.com</a> <a href="mailto:rizzo4@upmc.edu">rizzo4@upmc.edu</a>
Career Transitions	Priscilla de la Cruz (Co-lead) Alicia Rizzo (Co-lead)	<a href="mailto:Priscilla.m.delacruz@gmail.com">Priscilla.m.delacruz@gmail.com</a> <a href="mailto:Rizzo4@upmc.edu">Rizzo4@upmc.edu</a>
International Engagement	Luke Flower	<a href="mailto:Luke.flower@doctors.org.uk">Luke.flower@doctors.org.uk</a>

This year's highlights for the ECPWG so far have included:

- Ongoing connection and needs assessments by the Database Committee with early career members of the assembly through distribution of the [Assemblies Get Involved database](#) and [ECPWG-specific Database](#) throughout the year. These databases are used by the Programming Committee to offer moderating opportunities at the International Meeting.
- Successful development of a new sub-committee on Career Transitions, which has included two webinars (with a [third planned](#)) to discuss important topics relevant to early to mid-career members of the assembly. In addition to live attendance of these sessions, these webinars ([1](#), [2](#)) have had over 350 views on YouTube.
- Organizing the mentorship program for this year's International Meeting looking to expand number of participants this year through direct outreach by members of the working group.
- Soliciting and assisting with Teaching Competition submissions for the annual conference. This effort has been led by the Education Sub-committee.
- Featuring 6 early career professionals in the [ECP Highlights program](#).
- The ECPWG X/Twitter (nearly 14,000 followers), BlueSky (> 850 followers) accounts, and LinkedIn (NEW; > 50 members, private group) led by the project group, continued to produce and communicate informative content.
- New [Lit Bits series](#) on foundational Critical Care clinical trials in short video format.
- Organizing two Early Career Professional Virtual Grand Rounds events this year led by the Speakers Roster sub-committee. There was excellent participation in our both sessions with ongoing engagement on YouTube ([1](#), [2](#)). These events, entitled "Disparities and Determinants of Critical Care Outcomes," and "Real World Data in Critical Care," highlighted the work of four early career members of the assembly.
- The Networking Sub-Committee offered an amazing webinar entitled, "[From ICU to Impact: Dr. Wes Ely on Crafting Productive, Resilient Research Teams](#)." This discussion offered practical insights on how to offer practical insights on how to build trust, align goals and lead high-impact collaborative teams in clinical and translational science.
- Continued to host a "Cover Letter" repository available for manuscript and grant submissions. This resource is gradually being expanded to include other example documents.
- Piloting an International Engagement sub-committee led by Luke Flower that will help prioritize the needs of international early career members of the assembly and engage with critical care communities around the world. Their work will include offering brief summaries for the assembly on international meetings, developing a manuscript on international training pathways for critical care, creating an upcoming needs assessment, and planning of a webinar.
- Engaged with Early Career Professionals Working Group across ATS through quarterly co-chair meetings. This has culminated in a cross-assembly event sponsored by several working groups entitled, "[Science Communication in an Era of Skepticism](#):"

[Building Trust While Maintaining Scientific Integrity.](#) This event will be a practical, discussion-based session focused on helping early career professionals navigate the increasingly complex landscape of science communication.

If you are interested in joining the ECPWG or one of its project groups, please fill out a submission in the [Assemblies Get Involved database](#) and the [ECPWG-specific Database](#).

If you have any questions or fresh ideas, please reach out to Joe Hippensteel, MD ([joseph.hippensteel@cuanschutz.edu](mailto:joseph.hippensteel@cuanschutz.edu)) and/or Nicholas Ingraham, MD, MS ([ingra107@umn.edu](mailto:ingra107@umn.edu)), ECPWG Co-Chairs.

## AGING IN CRITICAL CARE INTEREST GROUP

Lauren Ferrante, MD, MHS, ATSF & Nathan Edward Brummel, MD, MSci, ATSF (Co-Chairs)

### Overview

The Aging in Critical Care Interest Group is an interprofessional, cross-assembly group focused on improving the health and care of older adults with critical illness and pulmonary disease. Although appointed under the Critical Care Assembly, the Interest Group serves as the organizational home for aging-focused activities across ATS, spanning clinical care, translational and basic science, education, and palliative care.

The Interest Group is organized into four coordinated subgroups that reflect the breadth of aging-related work within ATS:

### Critical Care Subgroup

Co-chairs:

Lauren Ferrante (Yale School of Medicine)

Nathan Brummel (The Ohio State University)

### Lung Aging Research Subgroup

Co-chairs:

Irfan Rahman (University of Rochester)

Beata Kosmider (Temple University)

Mareike Lehmann (University of Marburg, Germany)

### Geriatrics in Pulmonary Medicine (GeriPulm) Subgroup

Co-chairs:

Angela Suen (UCSF)

Lauren Pollack (University of Washington)

### Palliative Care Subgroup

Co-chairs:

Don Sullivan (Oregon Health and Sciences University)

Anand Iyer (University of Alabama-Birmingham)

Each subgroup contributes to ATS programming, educational initiatives, and strategic planning, with regular cross-group coordination led by the Interest Group co-chairs.

### Recent Activities and Accomplishments

Over the past year, the Aging in Critical Care Interest Group has demonstrated sustained growth and visibility across education, research, and national conference programming.

### Educational Programming:

Subgroups led and participated in multiple well-attended webinars and educational initiatives addressing age-friendly ICU care, frailty, lung aging biology, disparities in geriatric critical care, and integration of palliative care principles into pulmonary and critical care practice.

### 2025 ATS International Conference Programming:

### Aging in Critical Care Interest Group Meet-Up

**Monday, May 18 from 11:45AM-1:15PM**

**Location: Hyatt Regency Orlando**

**Room: Manatee Spring 1**

Members of all subgroups should plan to attend, and we welcome new members! We look forward to seeing you there!

The Interest Group successfully sponsored and co-sponsored multiple scientific and educational symposia at the 2025 ATS International Conferences, including sessions on frailty in the ICU, disparities in geriatric critical care, and inclusion of older adults in critical care trials.

### **2026 ATS International Conference**

*Sponsored Scientific Symposia:*

**“Words Matter: The Power of Language in Shaping Critical Care”**

Monday, May 18, 9:15–10:45 AM.

**“The Age of Inclusion: Building Better Critical Care Trials for Older Adults”**

Wednesday, May 20, 11:00 AM - 12:30 PM

### ***In-Person Meeting:***

Monday, May 18, 11:45 AM to 1:45 PM

Room TBD

*Members of all subgroups should plan to attend, and we welcome new members! We look forward to seeing you there!*

### **Collaborations**

Members engaged in collaborative efforts with Clin-STAR, SCCM, and the Center to Advance Palliative Care (CAPC), contributing to aging-focused educational content (see below) and guidelines for the care of older adults with critical illness development (forthcoming in March 2026).

### **Educational Resources**

The Aging Interest Group maintains the [ATS Toolkit for Age-Friendly Pulmonary and Critical Care](#). In 2026, we are continuing to update content, integrate palliative care educational materials, and increase visibility and utilization across ATS platforms.

A new series of learning modules on palliative care for patients with respiratory disease were developed by members of the PalliPulm subgroup. These modules were co-sponsored by the ATS and CAPC. The course can be accessed [here](#).

A summary of the workshop used to develop the learning modules was recently published in Annals ATS (see Iyer AS, et al., A “PalliPulm” framework to improve palliative care education and practice in pulmonary–critical care medicine: an official American Thoracic Society Workshop Report. Ann Am Thorac Soc. 2026 Jan;00:1-16.

### **Interested in Joining?**

The Aging Interest Group welcomes new members from all ATS assemblies and career stages. Interested individuals may contact:

Lauren Ferrante, MD, MHS – [lauren.ferrante@yale.edu](mailto:lauren.ferrante@yale.edu)

Nathan Brummel, MD, MSCI – [nathan.brummel@osumc.edu](mailto:nathan.brummel@osumc.edu)

## **WOMEN IN CRITICAL CARE (WICC) INTEREST GROUP**

Jenny Han, MD (Chair) & Elizabeth Vigilante, MD (Chair-Elect)

The Women in Critical Care (WICC) Interest Group with over 100 members, we meet quarterly to discuss how to support and expand opportunities for women in our specialty. To this end, we have 3 standing subcommittees:

- **Research** Co-chairs: Deepshikha Ashana, Kathleen Stringer
- **Mentorship** Co-chairs Snigdha Jain, Michelle Biehl WICC
- **Social Media** Co-chairs Rania Esteitie, Astha Guliani.

**Nominations for all Co-chairs and Chair-elect will be underway.** WICC is a home for ATS members (irrespective of gender) to discuss issues pertaining to women in critical care. We are continuing to actively promote women in critical care through outreach webinars such as America Women Medical Association. We have created WIN (Women in networking) at WICC, small group mentoring for early, mid-career and “off roaders”. In addition, the research committee have piloted a “Rapid Fire Specific Aims” NIH grant review style format for individuals to present their specific aims page to receive constructive feedback on their scientific work in a confidential manner. *If you are interested in getting involved or participating in rapid fire, please email, Jenny Han ([jehan2@emory.edu](mailto:jehan2@emory.edu)).*

Also, **please feel free to join us for informal WICC social at ATS IC, meeting in the hotel lobby 1 hour before the Critical Care Assembly Business Membership Meeting.** We will also be having our in person **WICC meeting May 18th Monday 7:00am.**

## Critical Care Advisory Group on ElectroNic Health Record DAta Science

Catherine Gao, MD, MS, & Pat Lyons, MD, MS, & Siva Bhavani, MD, MS (Co-Chairs)

Critical Care Advisory Group on ElectroNic health record DAta Science (CC-AGENDAS) is an advisory group for Assembly members who work with ICU EHR data for research, operations, quality and safety, and/or education. We are dedicated to advancing critical care through four key areas: educating members on data science and machine learning best practices via interdisciplinary workshops and seminars; establishing governance through standardized, ethical guidelines for critical care EHR data acquisition, preparation, and analysis; implementing shared toolkits for the development and deployment of machine learning models; and fostering multi-institutional research collaborations to create common data models and innovative clinical decision support systems.

In partnership with the Canadian Critical Care Forum (CCCF), we hosted the inaugural CCCF-ATS Datathon in Toronto in December 2025. The event brought together more than 25 participants, including data scientists, clinicians, and students from diverse backgrounds, who formed interdisciplinary teams to explore the theme of overuse in the ICU. Each team presented their findings at a scientific symposium held during the international conference, with their abstracts to be published in the Canadian Journal of Anesthesia. Projects examined topics such as prolonged central line use following vasopressor discontinuation, excessive deep sedation practices, and severe hyperoxia. The event received overwhelmingly positive feedback from participants and attendees.

We furthermore submitted a workshop proposal entitled “Standards and Methods for Clinical, Epidemiological, and Informatics Critical Care Research Using Electronic Health Record Data.” We are exploring the best avenues for revised versions of this proposal for future submission cycles.



We plan to convene an informal brainstorming session at ATS this year, where we can collectively discuss new ideas and avenues for collaboration. In the meantime, we welcome any additional suggestions, thoughts, or agenda items from our members. Please feel free to reach out to Cathy, Pat, or Siva directly (emails: [catherine.gao@northwestern.edu](mailto:catherine.gao@northwestern.edu), [lyonspa@ohsu.edu](mailto:lyonspa@ohsu.edu), [sbhava2@emory.edu](mailto:sbhava2@emory.edu))!

Sincerely,

Cathy, Pat, and Siva

Critical Care Advisory Group on ElectroNic health record DAta Science (CC-AGENDAS)

# Documents Development and Implementation Committee (DDIC)

Carol Hodgson, PhD

The American Thoracic Society (ATS) publishes six main types of official, evidence-based documents—clinical practice guidelines, clinical statements, policy statements, research statements, technical standards, and workshop reports. These documents are mostly published in the *American Journal of Respiratory and Critical Care Medicine* (AJRCCM) or the *Annals of the American Thoracic Society* (AnnalsATS), and provide recommendations for patient care, policy positions, and technical procedures to improve respiratory, critical care, and sleep medicine. Beginning in 2026, the AJRCCM will review all submitted documents to determine final publication placement

Our Society's flagship journal, the AJRCCM benefits from ATS guidelines that are published and then widely cited in the literature. For example, ATS's ARDS guidelines were 9<sup>th</sup> and 12<sup>th</sup> overall in ATS Guideline citations. The Critical Care Assembly did not submit any guideline proposals in 2024 or 2025. A brief update on a current clinical practice guideline under development (led by Dr. Carol Hodgson) is detailed below. Potential authors may reach out to the Critical Care Planning Committee to discuss any potential DDIC proposals (Hayley Gershengorn, Chair; John Reilly, Co-Chair).

Pete Morris, MD  
CCA Member on the DDIC

ATS/ERS Clinical Practice Guideline on Physical Rehabilitation and Mobilization for Critically Ill Adults

Our guideline is focusing on the following questions (based on the priority ranking of our panel):

Question 1. In adult patients admitted to an ICU, should active physical rehabilitation/ mobilization be provided versus a control group that is usual care, no active rehabilitation/ mobilization, or delayed or lower dose rehabilitation/ mobilization?

Question 2. In adult patients admitted to an ICU, should we deliver early rehabilitation/ mobilization ( $\leq$  72 hours) versus later ( $>$  72 hours)?

Question 3. In adult patients admitted to an ICU, should we deliver physical rehabilitation/ mobilization at higher duration/ frequency/ intensity versus lower duration/ frequency/intensity?

Question 4. In adult patients admitted to an ICU, should we deliver physical rehabilitation/ mobilization daily, including weekends (i.e., at least 6 days or more per week as compared to fewer than 6 days)?

Question 5. In adult patients admitted to an ICU, should we deliver protocolized or progressive *functional* mobilization/ rehabilitation in addition to usual care versus usual care alone?

Question 6. In adult patients admitted to an ICU, should we deliver cycling plus usual care versus usual care alone?

We have completed all literature searches, systematic reviews and evidence syntheses. Panel deliberations with evidence to decision frameworks have been completed for 3 of the 6 PICOs. A final manuscript should be delivered in 2026.

**Assembly members interested in submitting a Project application should start developing their ideas. Applications for NEW Assembly Projects for 2027 will be accepted July 1 through July 31, 2027.**

**If you have an idea or suggestion for a project application and need assistance, please contact your Assembly Planning Committee Chair, Hayley B. Gershengorn, at [hbg20@med.miami.edu](mailto:hbg20@med.miami.edu)**

For questions regarding submissions please contact Miriam Rodriguez  
[Mrodriguez@thoracic.org](mailto:Mrodriguez@thoracic.org)

## 2026 Respiratory Health Awards CC Assembly Colleagues - don't miss this!

Congratulations to the recipients of the 2026 Respiratory Health Awards! 🎉

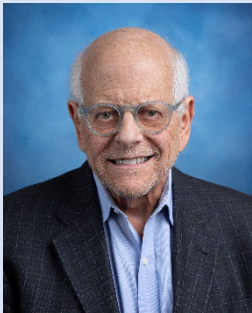
**Plenary Session** – Tuesday, May 19 - 11:45 a.m. - 1 p.m.  
Orange County Convention Center - Chapin Theater (Level III - West Concourse)



**Jo Rae Wright Award for Outstanding Science** – Elizabeth M. Viglianti, MD, MPH, MSc



**Outstanding Educator Award** – Jakob I. McSparron, MD, ATSF



**Don't Miss the 2026 Amberson Lecture - Sunday, May 17- 4:30 - 5:00 p.m.**  
**Orange County Convention Center - Chapin Theater (Level III - West Concourse)**

**J. Burns Amberson Lecture – Marc Peters-Golden, MD**  
**Cyclic AMP vs. Fibrosis: Harnessing Homeostasis and the Power of Pleiotropy**

### Reception for PhDs & Other Basic Science Researchers

**Sunday, May 17th from 3 - 5 p.m.  
Sunburst Room and Terrace  
Orange County Convention Center (West Concourse Level III)**

The ATS Science and Innovation Center (SIC) working group and the PhD working group, would like to invite PhDs and other Basic Science Researchers to a special reception event. The reception will provide an intimate setting for networking while also allowing guests to mingle. Cocktails will be provided.

**Register Here: <https://ats2026.d365.events/education/sessions/d22f1d05-70a8-484a-bd54-ac7e3cc3e3>**

## Advocacy Sessions

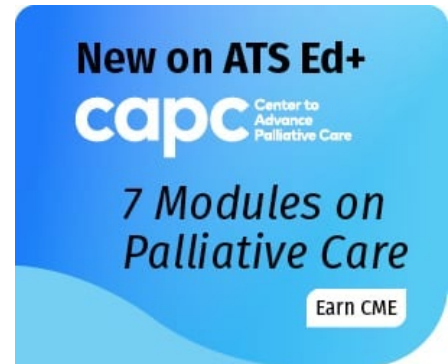
Special Topic Sessions 12-1:15		
Sunday, May 17		
Session Code:	Session Title	Speakers
<b>SPS3</b>	Advocating for Clean Air and a Better Climate - ATS Efforts in Environmental Health and What You Can Do	Alison Lee MD MS, Nick Nassikas MD
<b>SPS4</b>	Next Generation MDI Inhalers – Opportunities and Implementation Challenges	Mary Rice MD, William Feldman MD, Jyothi Tirumalasetty MD
<b>SPS5</b>	Coding and Billing Advocacy for ATS members	Dr. Frye, Dr. Ahasic
<b>SPS6</b>	Pediatric Pulmonary Advocacy in Action	Christy Sadreameli, Folashade Afolabi, Anna Volerman Beaser, Angela Metcalf, Devika Rao
MONDAY MAY 18		
<b>SPS11</b>	Preserving the Pathway – Early Career Professionals Road to Research	Siri Vaeth, MSW, Hara Levy, MD, MMSc Andrew Herrin
<b>SPS13</b>	Clearing the Air: Mobilizing Tobacco Advocacy	Anne Melzer, MD, Sven Jordt, PhD,
<b>SPS15</b>	Navigating Health Policy in a Changing Landscape: Coverage, Workforce, and Advocacy	Andrew Herrin, Sharron Crowder, PhD, RN, ATSF, FAAN, Nicholas Kolaitis, MD, MAS, Mary McGowan, Denise Kent, PhD, APRN
<b>SPS16</b>	Florida and its Critical Needs	Michael D. Schweitzer, MD, Amanda Kovacich, William Miller

## Networking Super Center

Networking Super Center - ATS 2026: Learning Studio				
Dates/Times	Sunday, May 17	Monday, May 18	Tuesday, May 19	Wednesday, May 20
7:00 - 8:00 AM	PRDS Ceremony	How to Work with Industry in 2026	From A-to-I & O-to-Omics: An Introductory Field Guide to AI & Omics Research in Lung Diseases	High-Tech, Human-Centered: Practical Strategies for Integrating Ultrasound, AI, and Digital Tools Without Losing the Patient
9:00 AM - 10:00 AM	Teaching in the ICU @ Night	Getting Engaged in Clinical Trials: Pathways and Strategies for Budding Trialists	From Science to Storytelling: How to Use Narratives to Advocate for Change	Widen Your Net, Broaden Your Path: Networking and Portfolio Building for Early Career Scientists
10:00- 11:00 AM	Conducting High-Impact Pulmonary Research in Low- and Middle-Income Countries	Elevator Speech Workshop: Sharpening Your Professional Identity	Diagnosing and Addressing Learning Disabilities in Trainees	Models and Techniques to Map the Influence of Extracellular Matrix Across the Lung
11:00 AM - 12:00 PM	Advocacy Roadmap: A Path to Career and Advocacy integration	AJRCCM, AJRCMB, AnnalsATS, ATS Scholar Combined Journal Talks Journal editors	Legislation, Implementation, Outcomes, and the Path to 50 States: Stock Albuterol Policies	Reliable Lung Sounds: Practical AI at the Point of Care
12:00 - 1:00 PM	Navigating Prior Authorization Challenges and Finding Solutions	Breathe Easy: The Scope of Pediatric Pulmonary Fellowship Training in the United States	Finding Your Team: Networking Across Disciplines for Stronger Science	Survive, Then Thrive: Innovations in Post-ICU Recovery with Team-Based Care
1:00-2:00 PM	Strategies for Success in Leadership	Strategies for Patient Engagement in Research & Clinical Care: PAR Expertise and Support	Who I Am Matters: The Impact of Intersecting Identities on Workforce, Research, and Health Outcomes	
2:00 - 3:00 PM	Resources from the NIGMS Sepsis Human Biospecimens Program	Optimizing Individual Learning in the Multi-Disciplinary ICU: Building Skills & Gaining Competencies	From Labs to Lungs: Translating Respiratory Science for Impact	
3:00 - 4:00 PM	Physician Wellbeing 2.0 (Beyond the Warm and Fuzzy Hour)	Navigating the Early Career: Expert Panel Discussion of Career Development, Mentoring, and Networking	Academic Career as an International Medical Graduate (IMG)	
4:00 - 5:00 PM	Storytelling Series	Storytelling Series	Storytelling Series	
<b>Networking Events:</b> PhD Reception (3-5 p.m.) TEACH (4-5 p.m.) IMG Reception (4-5 p.m.)				

### ATS & CAPC CME Learning Series on ATS Ed+ for Clinicians

The ATS and the Center to Advance Palliative Care (CAPC) have partnered up to launch a CME-certified comprehensive [learning series of seven courses on ATS Ed+](#). In the last three months of life, only about 20% of patients with COPD are referred to palliative care services—compared to approximately 60% of patients with cancer.



## Assembly Giving Is Live!

A link for Assembly Giving can be found on each Assembly home page.



Secure donation

Dedicate this donation (optional)

Give once  Monthly

\$1,000 \$500 \$250

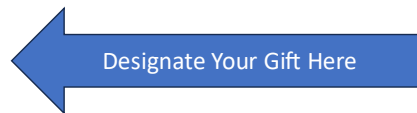
\$100 \$50 \$25

\$350 USD

Designation  
CC Assembly Awards and Scholarships ...

Donate

CC Assembly Designations:  
CC Awards and Scholarships  
CC Programs



Each page has a link to give to the ATS Research Program.



Tailored education—  
anytime, anywhere



“It’s like Netflix for Pulmonologists!”

— Raed Dweik, MD, MBA, ATSF, ATS President



Activate your **FREE** subscription.  
Visit [atsnow.thoracic.org](https://atsnow.thoracic.org).

## Access **ATS NOW!** Tailored Education— Anytime, Anywhere

Meet the ATS’s new on-demand video learning platform driven by AI. Stream content curated from ATS 2025 and ATS 2026 just for you – a personalized way to explore conference highlights, podcasts, webinars, and other learning content. Your ATS 2026 registration automatically includes complimentary access, giving you an AI-curated collection of recorded conference sessions, key presentations, and additional educational content at **no extra cost through Dec. 31, 2026**.

Enroll to enter a drawing and  
a chance to **WIN BIG!**

**FIRST PRIZE**

**FREE VIP experience at  
ATS 2027, New Orleans**

**SECOND PRIZE**

**Series 11 Apple Watch**



# Step into the future at the AI Lab

Visit the **ATS 2026 AI Lab Exposition Space** — a dedicated innovation site inside the Exhibit Hall.

Experience curated sessions from the **ATS AI Taskforce** and **hands-on engagement** with industry leaders.

